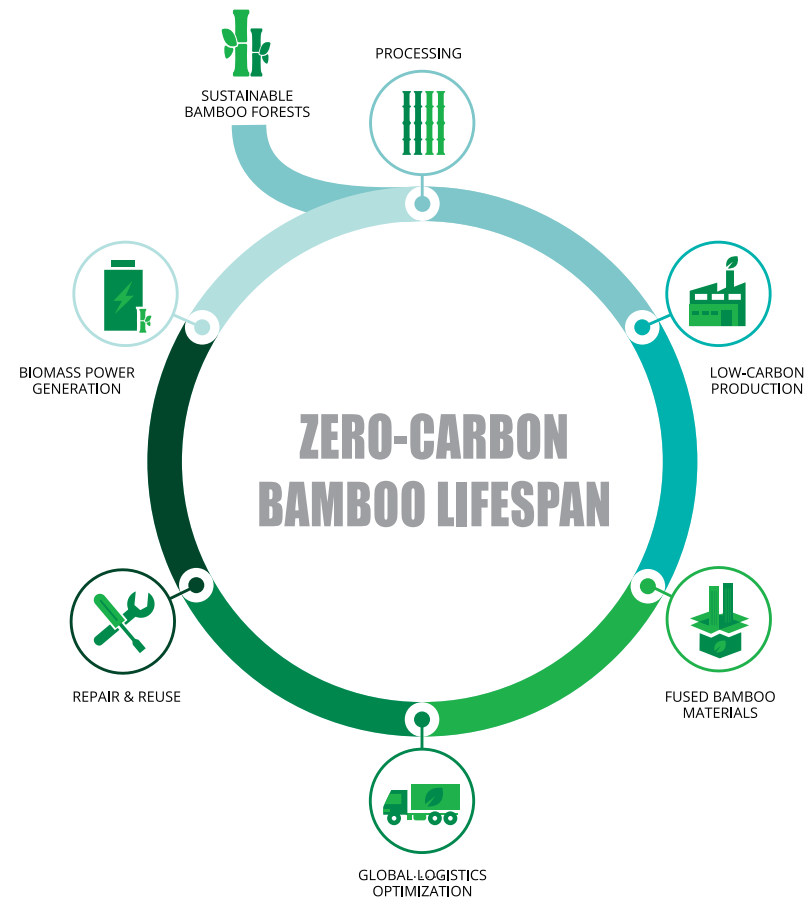
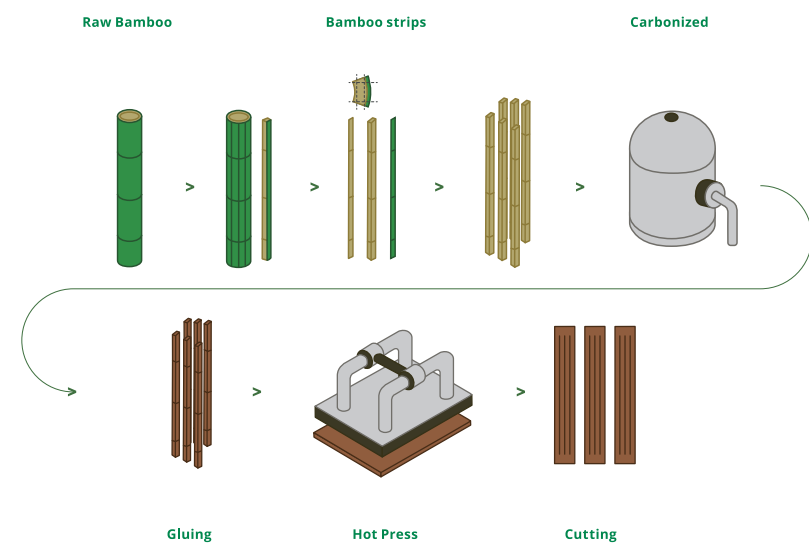


## LIFE CYCLE OF BAMBOO PRODUCTS



Carbon negative across its entire lifecycle. Infinite resource that regenerates naturally without replanting. Captures 2 to 5 times more CO<sub>2</sub> than tropical rainforests.

## PROCESSING DIAGRAM



## BAMBOO SCENARIOS

Choosing dasso bamboo products for your outdoor projects ensures long-lasting durability and adds a natural, elegant touch to your space. With its sustainable production methods, dasso bamboo products is both eco-friendly and aesthetically pleasing, making it a perfect choice for any outdoor setting.



### dasso China

Add: Tongyi, Linpu, Xiaoshan, Hangzhou, China 311251  
Tel: 86.0571.5716.3765  
Fax: 86.0571.5716.3700  
Email: info@dassogroup.com  
Web: www.dassogroup.com

### dasso USA

Add: 6060 Boat Rock Blvd, Suite 800, Atlanta, GA 30336  
Tel: 1.404.691.6872  
Fax: 1.404.691.6870  
Email: info@dassousa.com  
Web: dassoxt.com

Global Innovator of Bamboo Products  
**dasso**



COLOR SELECTION  
DASSO OUTDOOR BAMBOO

# COLOR SELECTION

DASSO OUTDOOR BAMBOO

GROWS OVERNIGHT. LASTS A LIFETIME.

## FUSED BAMBOO BENEFITS



### Environmentally Friendly

dassoXTR dassoCTECH  
Carbon-negative throughout its entire life cycle. For further information, please consult our Environmental Product Declaration (EPD)



### Termite Resistance

dassoXTR  
Level of termite resistance:  
Class 8 (AWPA-2012, AWPA E1-09)

dassoCTECH  
Level of termite resistance:  
DC (Durable)  
(EN 350:2016)



### Fire Resistance

dassoXTR dassoCTECH  
Decking:  
Class Bfl-s1 (DIN EN 13501-1)  
Cladding:  
Class B-s1, d0 (DIN EN 13501-1)



### Mould Resistance

dassoXTR dassoCTECH  
Level of mould resistance: Classification 0 (DIN ISO 846 : 1997-10) (DIN EN 152 : 2011)



### Hard & Durable

dassoXTR  
Hardness - Brinell: ± 106.8N/mm<sup>2</sup> (DIN EN 1534)  
Bending Strength (MOR): 87N/mm<sup>2</sup> (DIN EN 408)  
Modulus of Elasticity (MOE): 18400N/mm<sup>2</sup> (DIN EN 408)

dassoCTECH  
Hardness - Brinell: ± 79.2N/mm<sup>2</sup> (DIN EN 1534)  
Bending Strength (MOR): 110N/mm<sup>2</sup> (DIN EN 408)  
Modulus of Elasticity (MOE): 12300N/mm<sup>2</sup> (DIN EN 408)

dassoXTR dassoCTECH  
Durability class 1 (EN 350:2016)  
Use class 4 (EN 350 - EN 335)



### Guarantee

dassoXTR dassoCTECH  
25-year warranty  
for both residential and commercial

## ABOUT DASSO



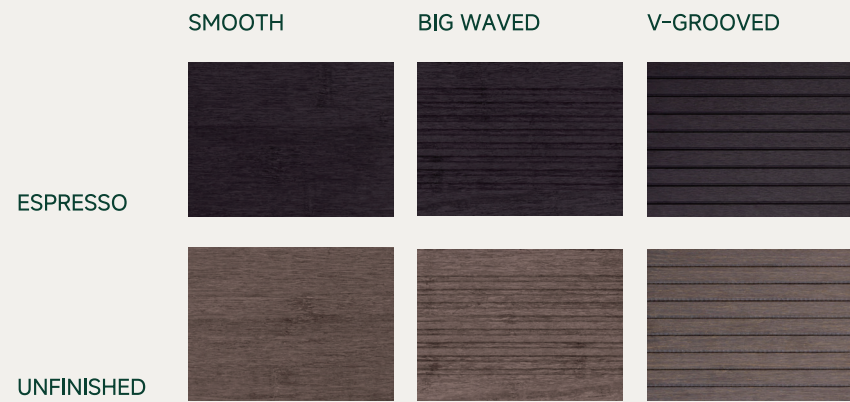
Founded in 1993, dasso has specialized in the research, development, production, and sales of bamboo resources. With a portfolio of well-known brands, we provide innovative bamboo solutions to over 50 countries and regions. For over 30 years, we have driven the sustainable development of the bamboo industry through technological innovation, aiming to be a global leader in bamboo applications.

Espresso and Cognac are available across all decking, cladding, soffits, and lumber & panels, with a select range of additional colors thoughtfully crafted for decking, as shown below.

## dassoCTECH



## dassoXTR



\*Colors are for reference only; please refer to the actual product for precise color representation. Natural products may vary between batches. Please contact sales to confirm product color.

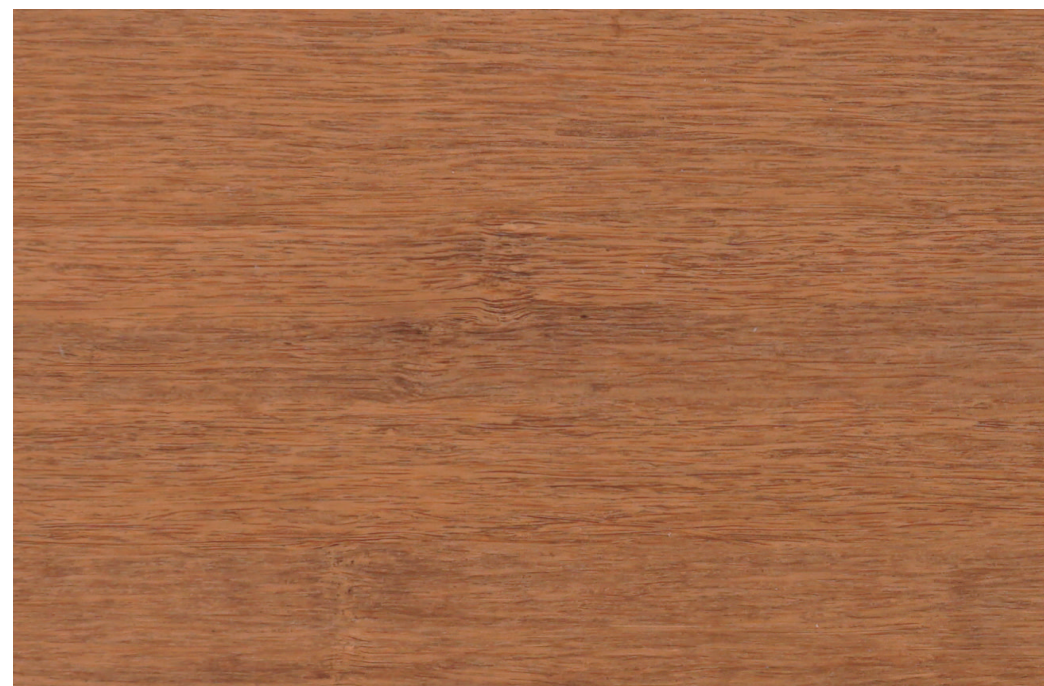
COGNAC



SAHARA



AMBER



TEAK



ESPRESSO



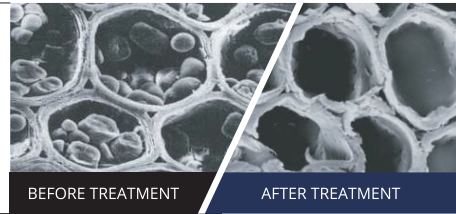
XTR - UNFINISHED



## TECHNOLOGY PRINCIPLE

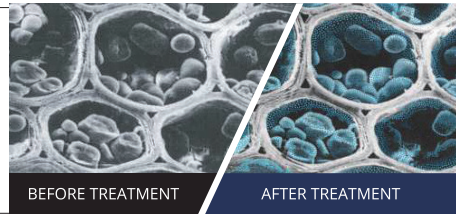
### dassoXTR

dassoXTR patented fusion process extracts the sugars and starches from the bamboo fibers and replaces it with phenolic resins. Then the impregnated fibers are compressed to create a very hard, dense and durable Fused Bamboo that prevents bacteria, fungus and other micro-organisms from attacking dassoXTR.



### dassoCTECH

dassoCTECH is made by crystallizing bamboo fibers with CeramIX particles, impregnating them with phenolic resin (the same durable resin used in bowling balls), and then compressing the material to form Fused Bamboo. The CeramIX particles bond to the fibers, preventing nutrients from attracting bacteria, fungi, mold, or insects. As a result, the bamboo fibers do not rot, even when exposed to outdoor environments.



## OTHER EXTERIOR MATERIALS VS DASSO FUSE BAMBOO

Species	Brinell Hardness (N/mm <sup>2</sup> )	Density (kg/m <sup>3</sup> )	Swelling Rate Width (%)	Swelling Rate Long (%)	Swelling Rate Thickness (%)	Durability Class	Use Class
Oak	34 - 37	680 - 720	9,6	0,1 - 0,3	4,5	2	3
Merbau	46 - 52	830 - 880	4,4	< 0,1	2,7	1	4
Ipe	60 - 70	1000 - 1200	6,4	< 0,1	5,1	1	4
Cumaru	57 - 65	1050 - 1150	7,7	< 0,1	5,5	1	4
dassoCTECH / XTR	80-100	1150-1200	0,6	< 0,1	4,0 - 5,1	1	4

## THE ADVANTAGES OF DASSO FUSED BAMBOO

Characteristic	Standard	dassoXTR	dassoCTECH
Mold-resistant	EN 152 EN ISO 846	Class 0	
Fire-resistant	EN 13501-1	Fire standard for decking : Class Bfl-s1 Fire standard for cladding : Class B-s1, d0	
Termite-resistant	AWPA E1-09 / EN 117	Class 8 (AWPA-2012, AWPA E1-09)	DC D (EN 117)
Terms of use	EN 350 - EN 335	Class 4	
Durability	EN 350	Class 1	
Brinell Hardness	DIN EN 1534	± 106.8N/mm <sup>2</sup>	± 79.2/mm <sup>2</sup>
Modulus of Rupture (MOR)	DIN EN 1534	87N/mm <sup>2</sup>	110/mm <sup>2</sup>
Modulus of Elasticity (MOE)	DIN EN 408	18,400N/mm <sup>2</sup>	12,300N/mm <sup>2</sup>